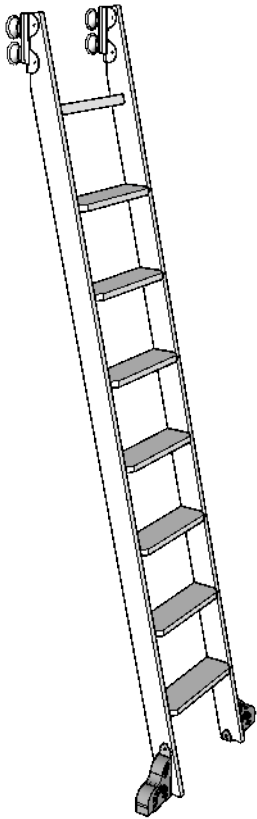


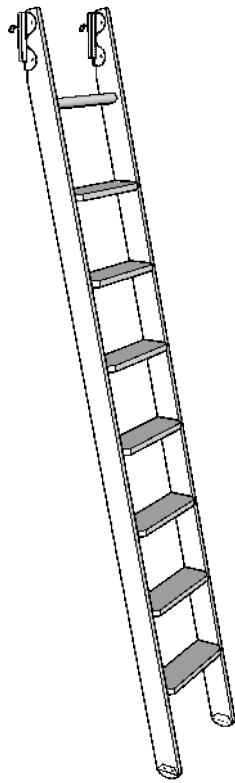
# ORDER GUIDE

## 1. CHOOSE YOUR HARDWARE TYPE

### ROLLING HARWARE KIT

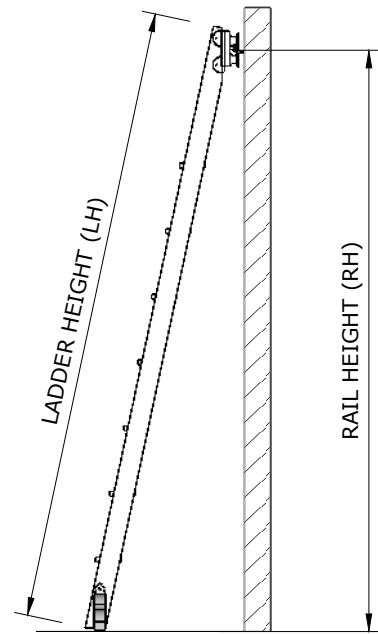


### HOOK OVER HARWARE KIT



<p>Kit includes:                  x2 top rollers                  x2 Bottom wheeled &amp; braking feet                  x7 ladder tread support bars</p>	<p>Kit includes:                  x2 top hooks                  x2 non slip feet                  x7 ladder tread support bars</p>
--	--

## 2. CHOOSE YOUR LADDER HEIGHT

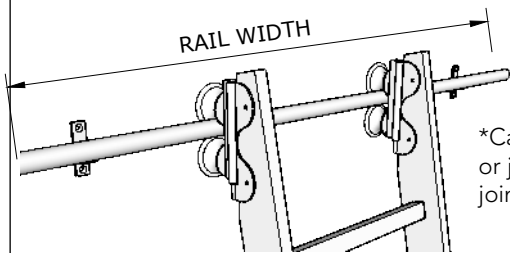


STANDARD LADDERS ARE 16INCHES WIDE

- LH - 7ft Ladder (2140mm) = RH 2280mm
- LH - 8ft Ladder (2440mm) = RH 2310mm
- LH - 9ft Ladder (2750mm) = RH 2620mm
- LH - BESPOKE

All our ladders are 16inches wide. Ladders are supplied unassembled (pre-drilled holes for fasteners, cut dados for steps) and unfinished (sanded to 120-grit).

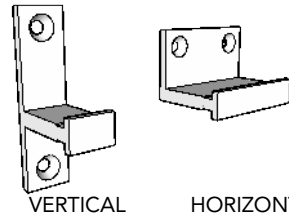
## 3. CHOOSE THE WIDTH OF YOUR RAILS



6FT WIDE  
8FT WIDE

\*Can be cut down onsite or joined together with a joining kit

## 4. CHOOSE THE TYPE OF BRACKET TO HOLD UP YOUR RAIL

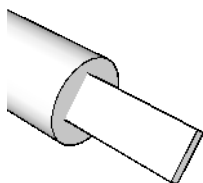


VERTICAL

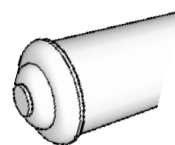
HORIZONTAL

\*You need x1 bracket every 3 feet.

## 5. ADD A JOINING KIT IF YOU WANT TO JOIN TWO LENGTHS OF RAIL TOGETHER



## 6. FINISH YOUR RAILS WITH AN END CAP KIT



(KIT INCLUDES X2)